

Lithuanian experience from pre - accession to EU period regarding the access to finance resources

Project: Strengthening the capacities of the Moldovan Social Assistance Sector

Audra Mikalauskaite

Deputy Director of European Union Structural Support
Department

Ministry of Social Security and Labour of Lithuania

January 2015



Content

Lithuania from 1991 to 2015 (some facts)

Pre-accession period 2004-2006

Financing Program for 2007-2013

Financing Program for 2014-2020

Lithuania conventional form: Republic





Capital: Vilnius

Geographical size: 65 300 km²

Population: 3 003 641 (2012)

Population as % of total EU population: 0.6 % (2012)

GDP: € 32.940 billion (2012)

Official EU language(s): Lithuanian

Political system: parliamentary republic


EU member country since: 1 May 2004

Seats in the European Parliament: 11

Currency: Member of the eurozone since 2015 (€)

Passport-free travel: Schengen Area member since 21 December 2007

Presidency of the Council: Lithuania has held the revolving presidency of the Council of the EU once in 2013.



Chief of state: President Dalia GRYBAUSKAITE (since 12 July 2009)
Head of government: Prime Minister Algirdas BUTKEVICIUS (since 22 November 2012)

Cabinet: Council of Ministers appointed by the president on the nomination of the prime minister and approval of the Parliament

Elections: president elected by popular vote for a five-year term (eligible for a second term); elections last held on 11 and 25 May 2014 (next to be held in May 2019); prime minister appointed by the president on the approval of the Parliament

Legislation: unicameral Parliament or Seimas (141 seats; 71 members elected in single-member districts, 70 elected by proportional representation; members to serve four-year terms)
elections: last held on 14 and 28 October 2012 (next to be held in October 2016)

Administrative division: 60 municipalities

EU INTERNATIONAL COOPERATION AND DEVELOPMENT

Through its European Neighborhood Policy (ENP), the EU works with its southern and eastern neighbors to achieve the closest possible political association and the greatest possible degree of economic integration.

This goal builds on common interests and on values:

- democracy,
- the rule of law,
- respect for human rights, and
- social cohesion.

The policy is designed to strengthen the prosperity, security and stability of all partners and to avoid the emergence of new dividing lines between the enlarged EU and countries of the southern Mediterranean, Eastern Europe and the southern Caucasus.

EU - Republic of Moldova **Association Agreement**



During the 29 November, 2013, Eastern Partnership Summit **in Vilnius**, the **EU - Moldova Association Agreement** was initiated.

The Association Agreement, including the Deep and Comprehensive Free Trade Area, will facilitate and strengthen political, economic and trade relations between the EU and the Republic of Moldova.

The Agreement puts a strong emphasis on democracy and the rule of law, human rights and fundamental freedoms, good governance, a well-functioning market economy and sustainable development.

Single Support Framework: priorities for Moldova (2014-2017)

In support of the implementation of the Association Agenda, the Single Support Framework was developed based on comprehensive consultation with the Government, Civil Society Organizations, multilateral and bilateral donors, International Financial Institutions and International Organizations.

(Government's programme "European Integration: Freedom, Democracy, Welfare 2011-2014" and the National Development Strategy ("Moldova 2020"))

A consensus has emerged regarding three priority sectors of assistance support:

- **Public administration reform**

The specific objective is to support the modernization of the central and local public administration through the introduction of a result-oriented management approach

- **Agriculture and rural development**

The main objective is to support Moldova to strengthen its economic, social and territorial cohesion in an environmentally sustainable fashion

- **Police reform and border management**

The specific overall objective of police reform, including border police reform

The police force is professionally trained, accountable, efficient and professional.

The indicative allocation for the 2014-2020 period is EUR 610 million - EUR 746 million based on successful reform implementation.

Relations between the EU and Moldova have been guided by the Partnership and Cooperation Agreement and the ENP Action Plan.

Now, they will be replaced by the EU-Moldova Association Agreement (AA), including a Deep and Comprehensive Free Trade Area (DCFTA) and an Association Agenda. The assistance to be provided during the programming period 2014-2020 is synchronised with the priorities and objective set out in the new Agreements.

EU bilateral assistance to Moldova under the European Neighbourhood Instrument (ENI) sharply increased from € 40 million in 2007 to € 131 million in 2014.



**What is Lithuanian
experiences in
accessing the EU and
structural support?**



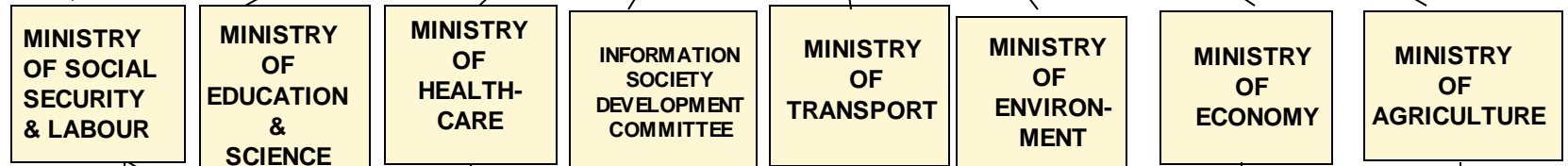
Pre - accession period 2004-2006

MANAGEMENT AND CONTROL SYSTEM 2004–2006 PROGRAMMING PERIOD

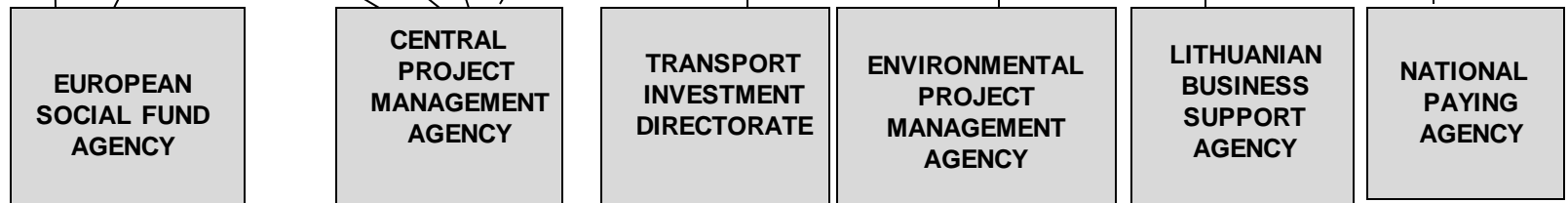
MANAGING
AND PAYING
AUTHORI-
TIES



INTERMEDIATE
BODIES



IMPLEMENTING
AGENCIES



STRUCTURE OF SPD DEVELOPMENT STRATEGY

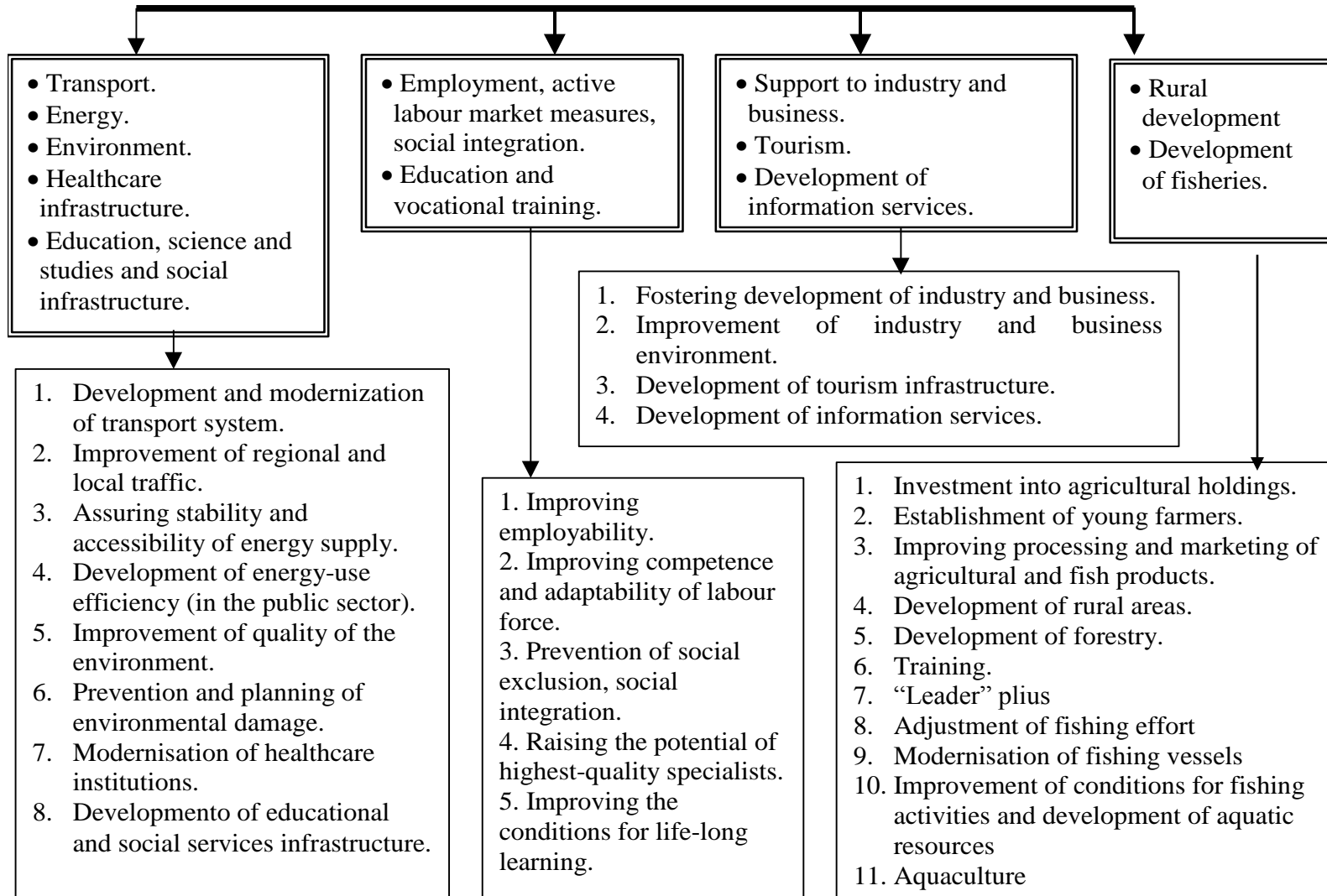
**DEVELOPMENT OF
SOCIAL-ECONOMIC
INFRASTRUCTURE**

**DEVELOPMENT
OF HUMAN
RESOURCES**

**DEVELOPMENT
OF PRODUCTIVE
SECTOR**

**RURAL
DEVELOPMENT
AND FISHERIES**

AXES OF IMPLEMENTATION OF PRIORITIES AND MEASURES



THE MAIN WEAKNESSES AND PROBLEMS IN PERIOD 2004–2006

- ✓ Lack of administration capacities and experience.
- ✓ The Managing Authority is responsible for additional functions not determined in EU Regulations: the creation and supervision of management and control system, coordination with other financial instrument and programs.
- ✓ The Rules on Administration and Payment for Projects financed under SPD measures were approved by the Minister of Finance. According to that, there was a problem of subordination between institutions responsible for administration of EU structural funds.
- ✓ The Structural Funds Management Information System (SFMIS) was not working properly at the beginning of the period.

MoSSL measures for HRD in 2004-2006 (ESF)

SPD 2004-2006 Measures (ESF funded)	Type of Funding
2.1. Development of Employability" (<i>direct financing</i>)	State planning (direct financing)
2.2. "Development of Labour Force Competence and Adaptability"	Calls for Proposals
2.3. „Prevention of Social Exclusion and Social Integration"	Calls for Proposals

Measures of the Priority 1 of the HRD OP (2007-2013) ESF

1. Development of human resources of enterprises	Call for proposals
2. Development of human resources of public sector	Call for proposals
3. Development of computer literacy	Call for proposals
4. Development of entrepreneurship	Call for proposals
<i>5. Improvement of qualification of health care specialists</i>	<i>Projects planning</i>
6. Promotion of social dialogue	Call for proposals
<i>7. Promotion of social responsibilities of enterprises</i>	<i>Projects planning</i>
8. Reconciliation of work and family life	Call for proposals
<i>9. Promotion of return of the Lithuanian emigrants</i>	<i>Projects planning</i>
<i>10. Re-orientation of labour force from agricultural to other activities</i>	<i>Projects planning</i>
<i>11. Human resources INVESTLT+</i>	<i>Projects planning</i>
<i>12. Integration of job seekers into labour market</i>	<i>Projects planning</i>
<i>13. Creation and improvement of the system of VR for disabled</i>	<i>Projects planning</i>
14. Reduction of discrimination and prevention of social problems	Call for proposals
15. Integration the social risk and social exclusion persons into the labour market	Call for proposals



2007-2013 period

What is necessary?

- EU SF management has to be **Sound, Efficient and Effective**



- It requires **Appropriate, Effective and Transparent systems**



- These **systems have to ensure:**
 - Selection** of quality operations and effective **implementation**
 - Prevention** and **detection** of **irregularities** and reasonable assurance on the **regularity of expenditure**
 - Delivery systems should be as **simple and streamlined** as possible
 - ...and **orientation towards results**

EU STRUCTURAL FUNDS – systems and requirements

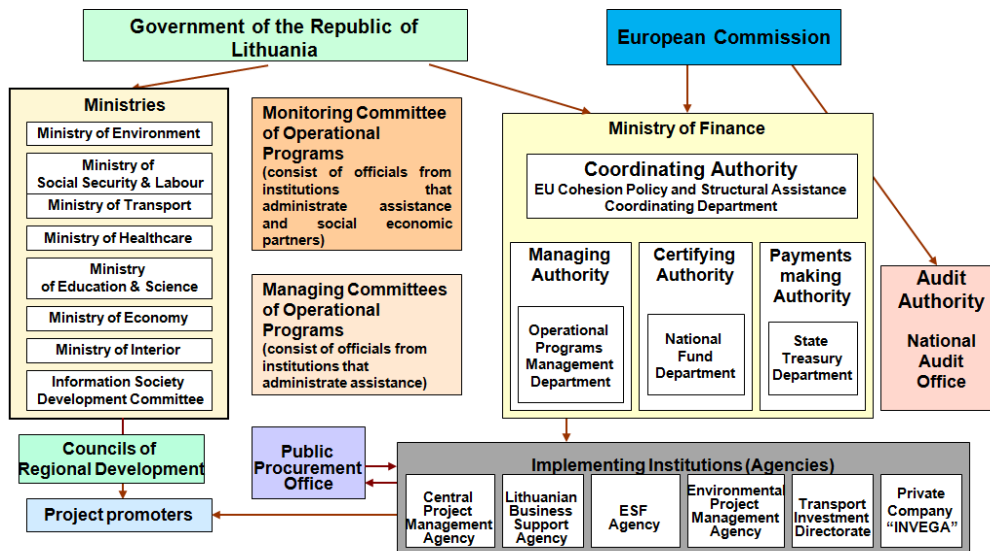
EU requirements



National and regional requirements



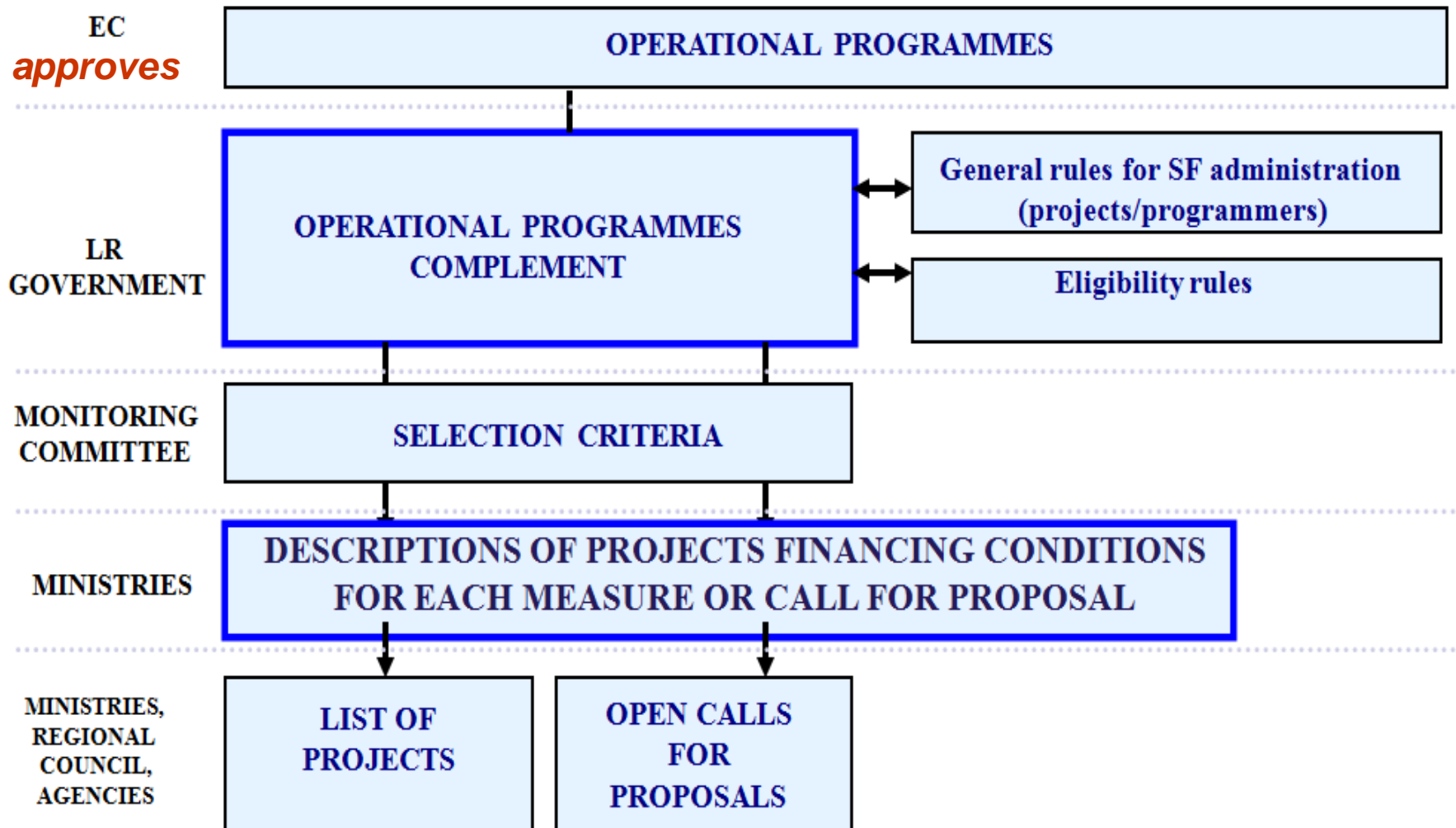
MANAGEMENT AND CONTROL SYSTEM 2007–2013 PROGRAMMING PERIOD



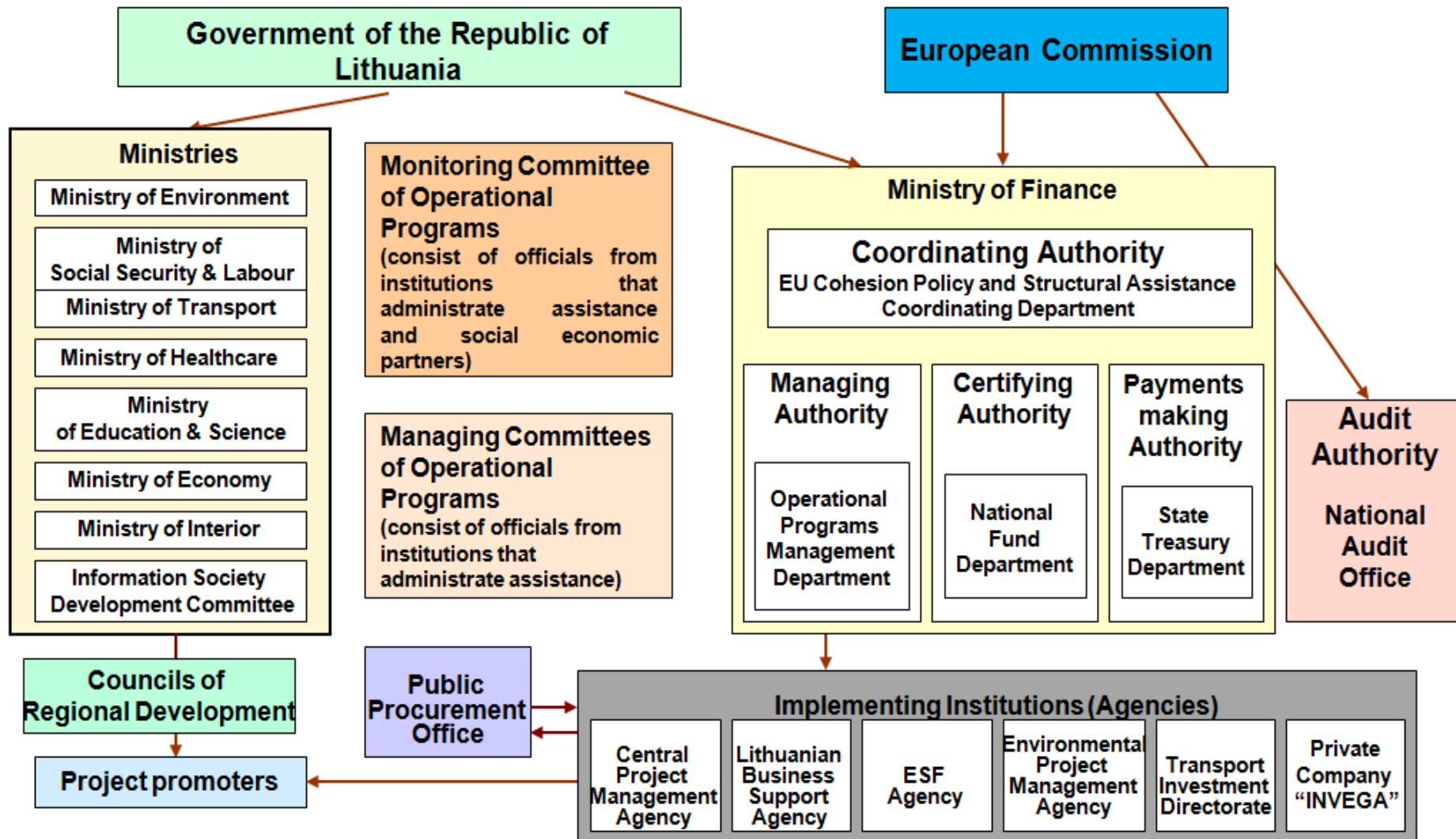
Project promoters



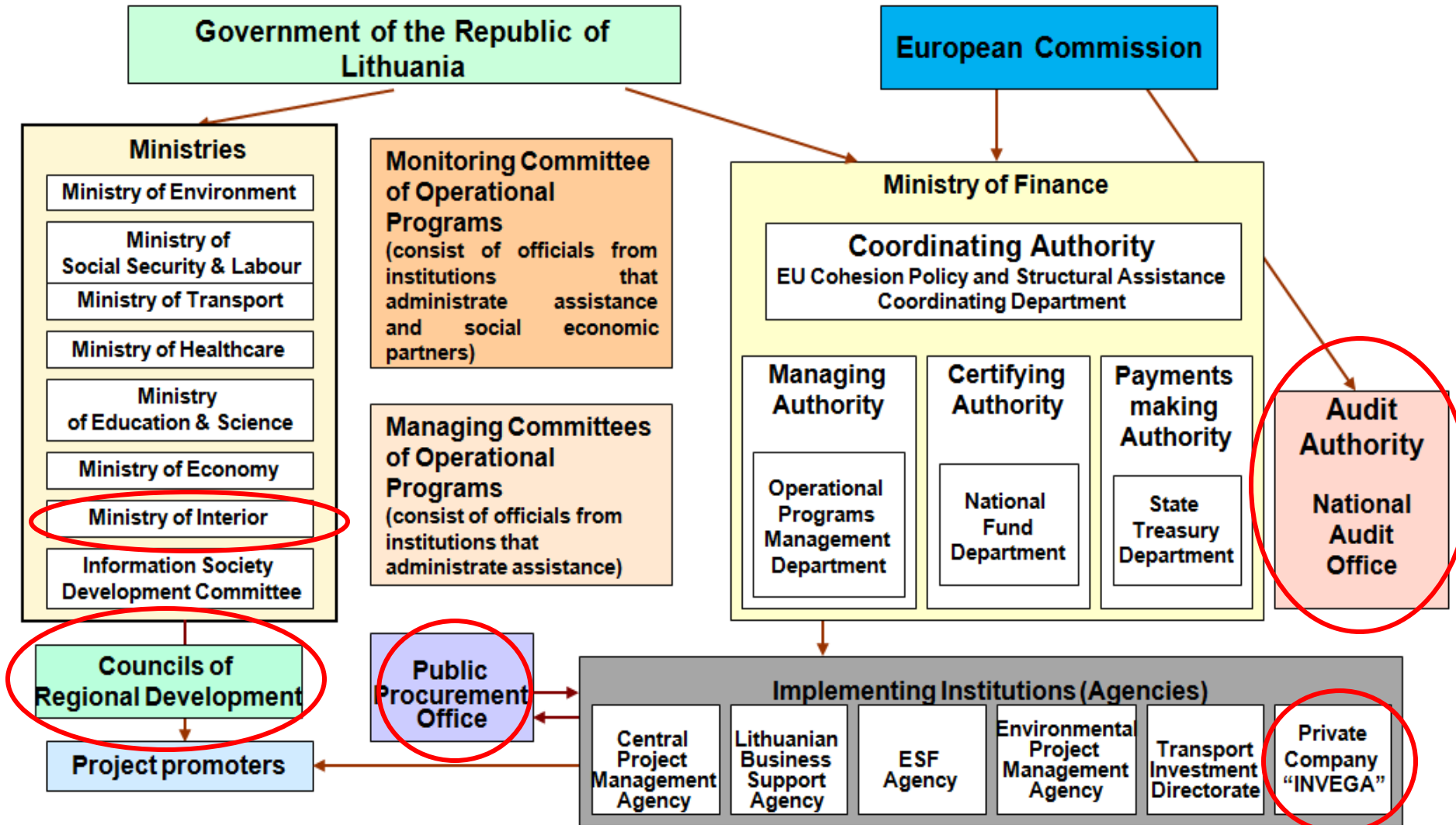
LEGAL ACTS SYSTEM



MANAGEMENT AND CONTROL SYSTEM 2007–2013 PROGRAMMING PERIOD



MANAGEMENT AND CONTROL SYSTEM 2007–2013 PROGRAMMING PERIOD

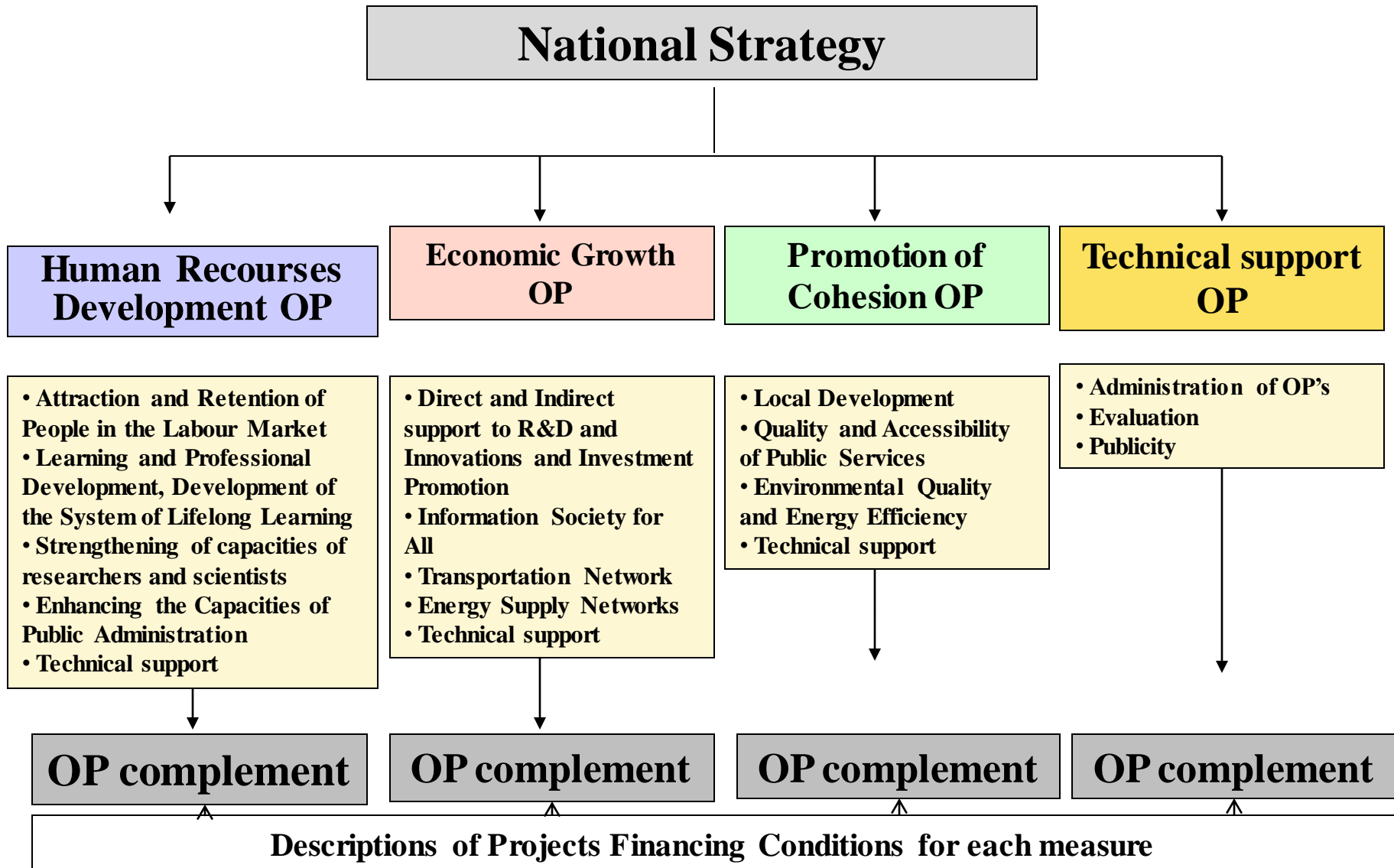


Ministry of Agriculture and National Paying Agency - OUT

THE MAIN FUNCTIONS OF THE INSTITUTIONS 2007-2013

- ✓ **Managing Authority** is responsible for the establishment of the general administrative, payment and monitoring rules and procedures and for the monitoring of their implementation as well as of the implementation of the programme.
- ✓ The function of the monitoring of individual measures has been delegated to **the ministries**, which have special units responsible for carrying out the functions of an **Intermediate Bodies**. They are responsible for setting up requirements for the calls for proposals, planning funds for measures, carrying out commitment and payment plans for the measures, certification of eligible expenditure (costs) to the Paying Authority, submission of reports on the implementation of the measures to the Managing Authority.
- ✓ The task of selection and monitoring the implementation of individual projects has been delegated to the **Implementing agencies**.
- ✓ **Coordinating Authority** is responsible for the coordination and improvement of the management and control system also sample checks.
- ✓ **Audit institution (State Control)** is responsible for the financial and system audits. Preparing Annual Audit reports for European Commission.
- ✓ **Paying Authority** is responsible for the certification of expenditure, the preparation of payment applications to the European Commission.

STRATEGIC DOCUMENTS OF STRUCTURAL SUPPORT 2007-2013

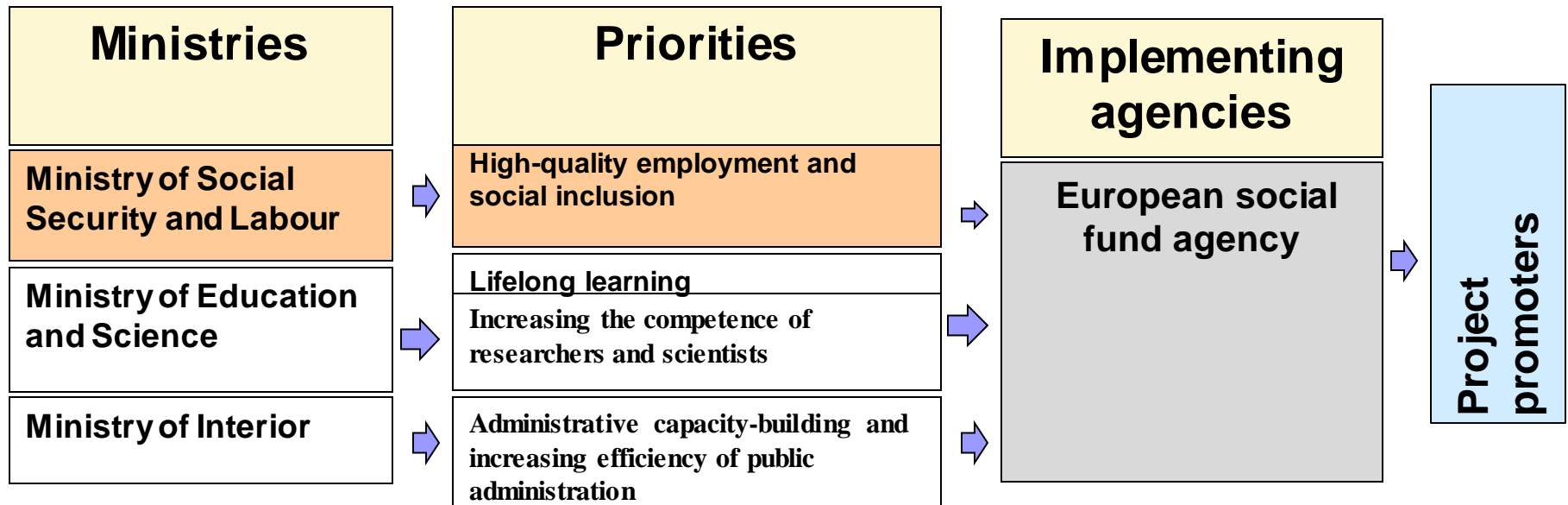


Cohesion Fund – IN, EAGGF and FIFG – OUT

Management Scheme of Human Resources Development (ESF) Operational Programme

Managing Authority
Ministry of Finance

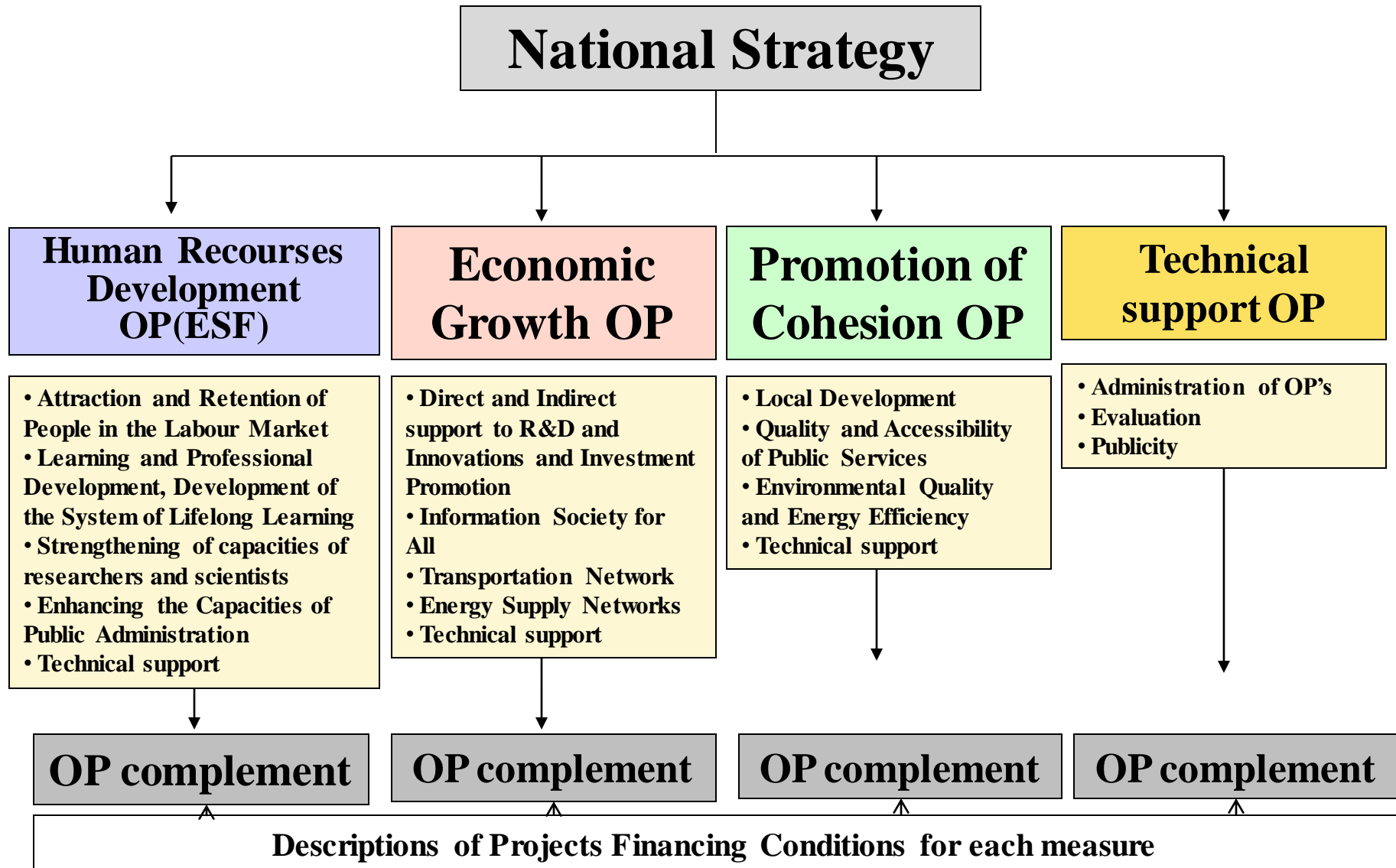
Operational Programmes (ESF) Management Committee



NATIONAL LEGAL FRAMEWORK

- *Government Resolution “On the distribution of Responsibilities and Functions of the Institutions Responsible for the Administration of 2007-2013 EU Structural Funds support” (17th of October 2007, No. 1139)*
- *Rules on Funding and Administration of EU Structural Support Development Programmes (approved by Government Resolution No. 1225, 12th of November 2008)*
- *Rules on Funding and Administration of EU Structural Support Projects (approved by Government Resolution No. 1443, 19th of December 2007)*
- *Government Resolution “On the Rules for Recovery of Amounts of EU support” (30th May 2005 No. 590)*
- *Rules on Detection, Investigation and Correction of Irregularities (Finance Minister’s Order No. 1K-307, 17th October 2005)*

STRATEGIC DOCUMENTS OF STRUCTURAL support 2007-2013



The Strategy for the use of EU Structural support for 2007-2013 (NATIONAL STRATEGY)

Human Resources
Development Operational
Programme

Economic Growth
Operational
Programme

Cohesion Promotion
Operational
Programme

Priorities

I. High-quality employment and social inclusion (Ministry of Social Security and Labour; 416 MEUR)

II. Lifelong learning
(218 MEUR)

III. Increase of the
capacity of researches
(118 MEUR)

IV. Administrative
capacity building and
increase of efficiency of
public administration
(162 MEUR)

Priority I...

Priority II...

Priority I...

**II. Quality and
Accessibility of Public
Services** (Ministry of Health,
Ministry of Social Security and
Labour (127 MEUR), Ministry of
Education and Science)

Priority III...

New measures introduced during the implementation of period 2007-2013 (ESF)

- Promotion of entrepreneurship (Finance engineering)
- Subsidies for promotion of entrepreneurship
- Support for first job
- Reconciliation of Work and Family Commitments:
Development of Integral Support
- Promotion of employment and motivation of Youth
- New state planning measure for drug-addicts

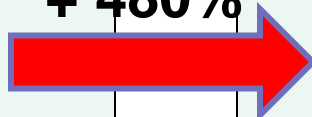
Comparison of ESF funding in 2004-2006 and 2007-2013

Period of 2004-2006

91,75 mln
Euro



+ 480%



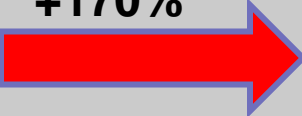
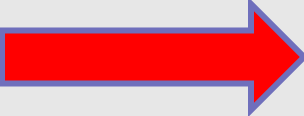

Period of 2007-2013

440,22 mln Euro



ESF funding was increased almost 5 times

Comparison of projects, participants and funding in 2004-2006 and 2007-2013

	2004-2006		2007-2013
Number of Projects	341	+170% 	577
Number of participants	205 000	+245 % 	500 000
Average value of the project	270 000 Euro	+280 % 	763 000 Euro



**First of all – qualified, creative
and constantly willing to improve
employees**

Administrative capacity building in EU SF management and control system

■ Context:

- Around **1200 employees** in ES SF management and control system
- **3 level institutional structure** (MA, line ministries and agencies) which composes of **18 institutions**
- Different cultures and legal status of institutions

Demand → to ensure that MA's delegated tasks are performed according to the requirements and effectively

■ Qualification development system:

- Review of EU requirements for systems and functions
- Identification of existing qualification development tools between institutions
- Determination of general (minimum) requirements for competences according to the institution and target group
- Identified 11 thematic subjects for the development of competences
- Launched procurement for centralized training services

IT TOOLS

LT experience –SFMIS 2007

- **Starting point: not IT tool for itself, but effective project cycle management tool**

- **Designed step by step together with detailed requirements for processes and procedures**

- **The main management tool for EU SF MCS institutions:**
 - Used in everyday EU SF management procedures
 - Paperless data exchange between EU SF MCS institutions
 - Data quality, reliability and sustainability

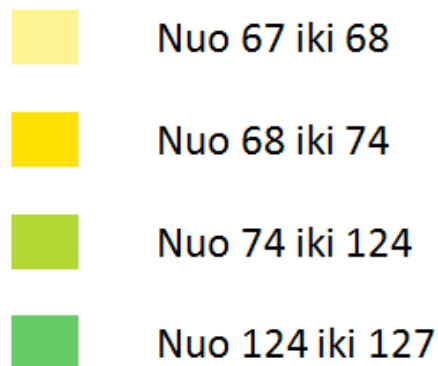
- **Electronic Application and payment claim forms**

- **Process monitoring**

Macroeconomic trends 2008-2013 in Baltic sea region and LT

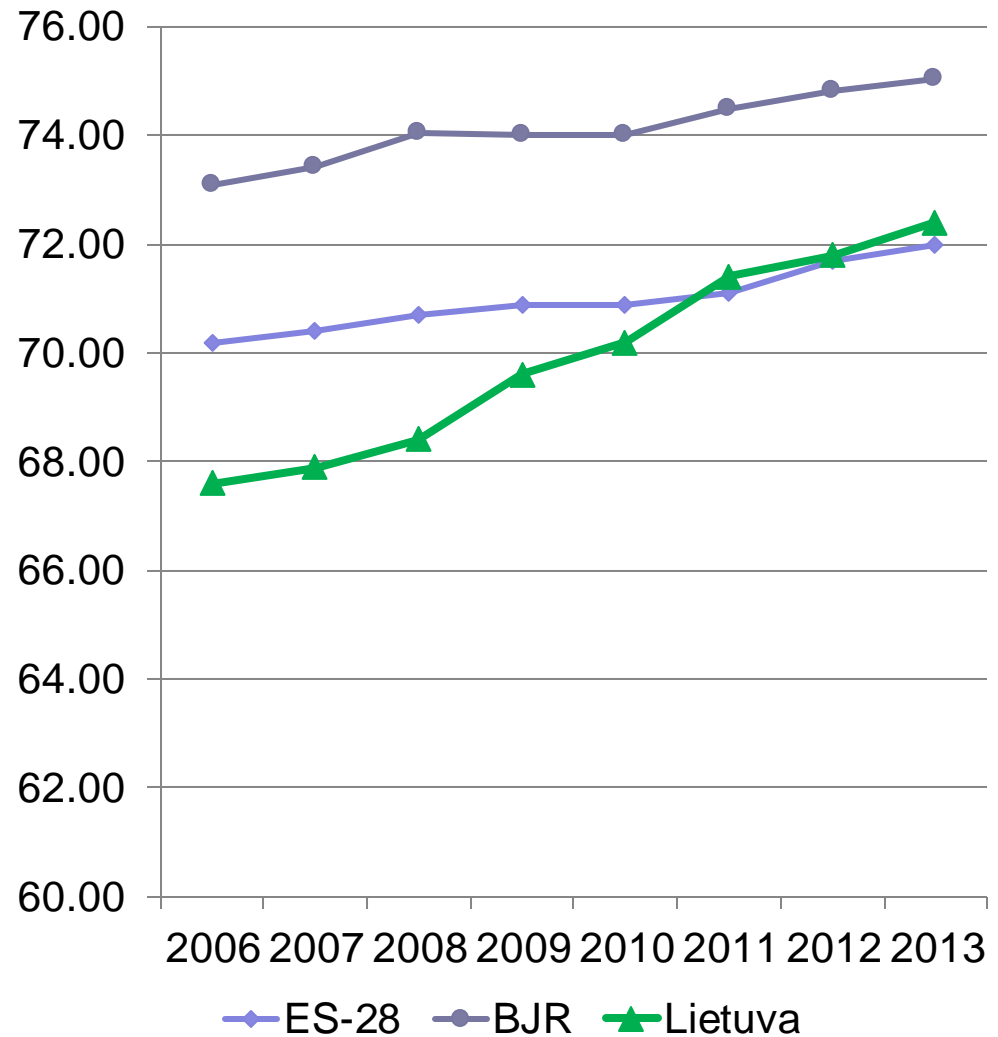
GBP for 1 inhabitant

- ⦿ Increase up to 2008
- ⦿ Rapid decrease in 2009
- ⦿ 71 % of EU in 2013 (for LT)



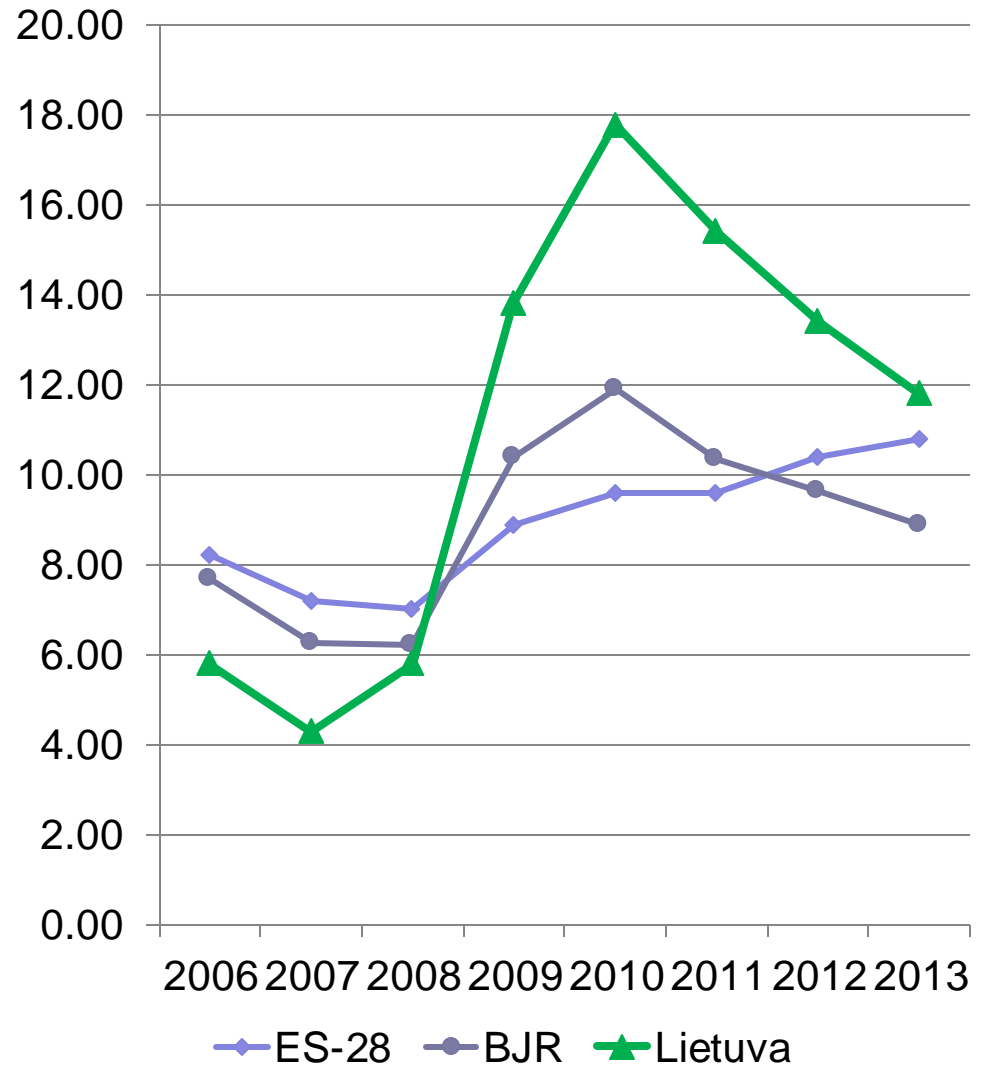
Macroeconomic trends 2008-2013 in Baltic sea region and LT

- Activity of the population
- The population decreases with an increase in level of activity, which has already reached the level of the EU in 2011.
- The increasing level of activity of the Lithuanian population is one of the reasons for high unemployment in Lithuania išliekančio.



Macroeconomic trends 2008-2013 in Baltic sea region and LT

**The unemployment rate
Increasing level of activity of the
Lithuanian population "is one of
the reasons for high
unemployment in Lithuania
išliekančio"**

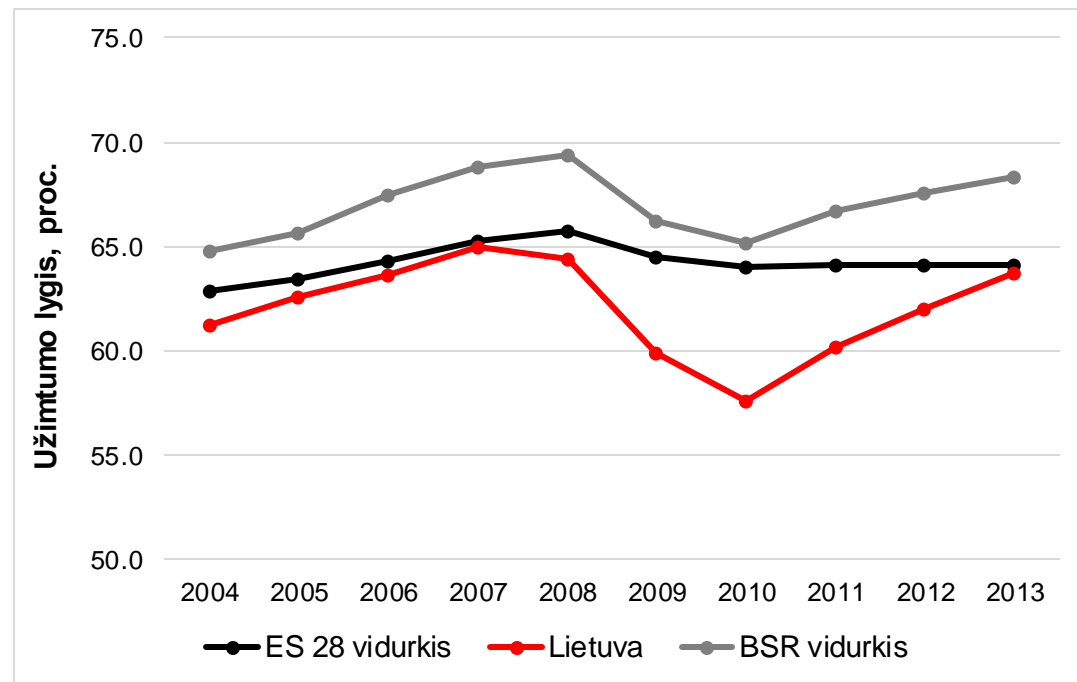


Macroeconomic trends 2008-2013 in Baltic sea region and LT

LABOUR MARKET

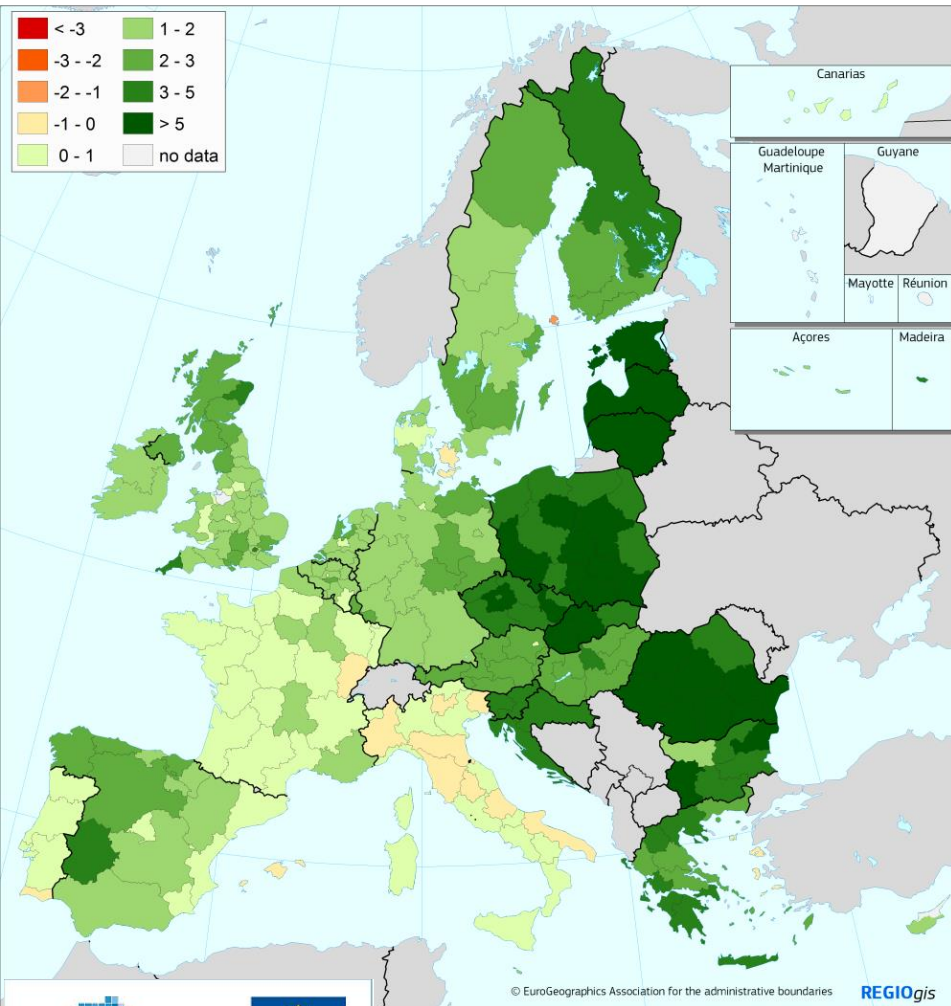
The level of employment is to increase the employment rate to 70%. (62.6% in 2005).

- The evolution of the indicator most due to the economic downturn in the level of employment, has consistently raised to 2007, in 2008 and 2010 and 2013 coincided. have reached the level of 2006.
- The gap between the EU and the countries of the Baltic Sea region in particular, has emerged as the average at the time of an economic downturn.



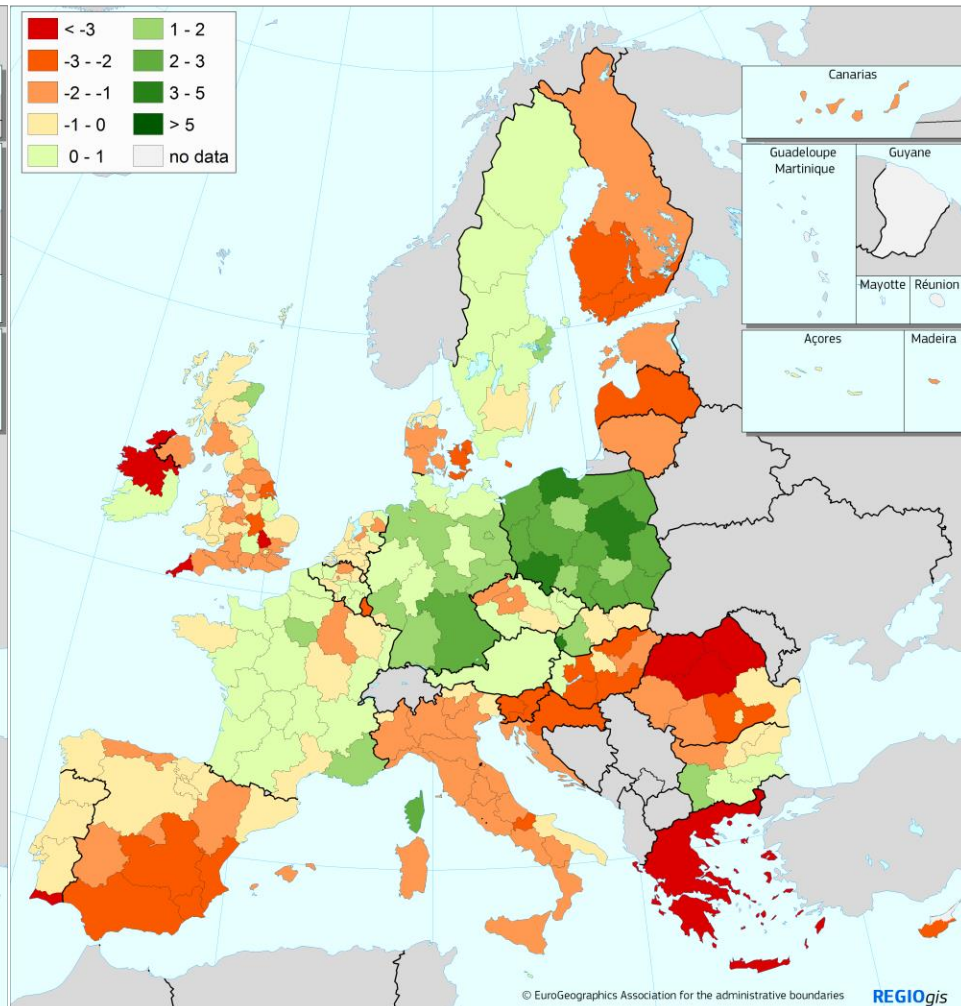
Growth of GDP per head in real terms, 2001-2008

Annual average % change



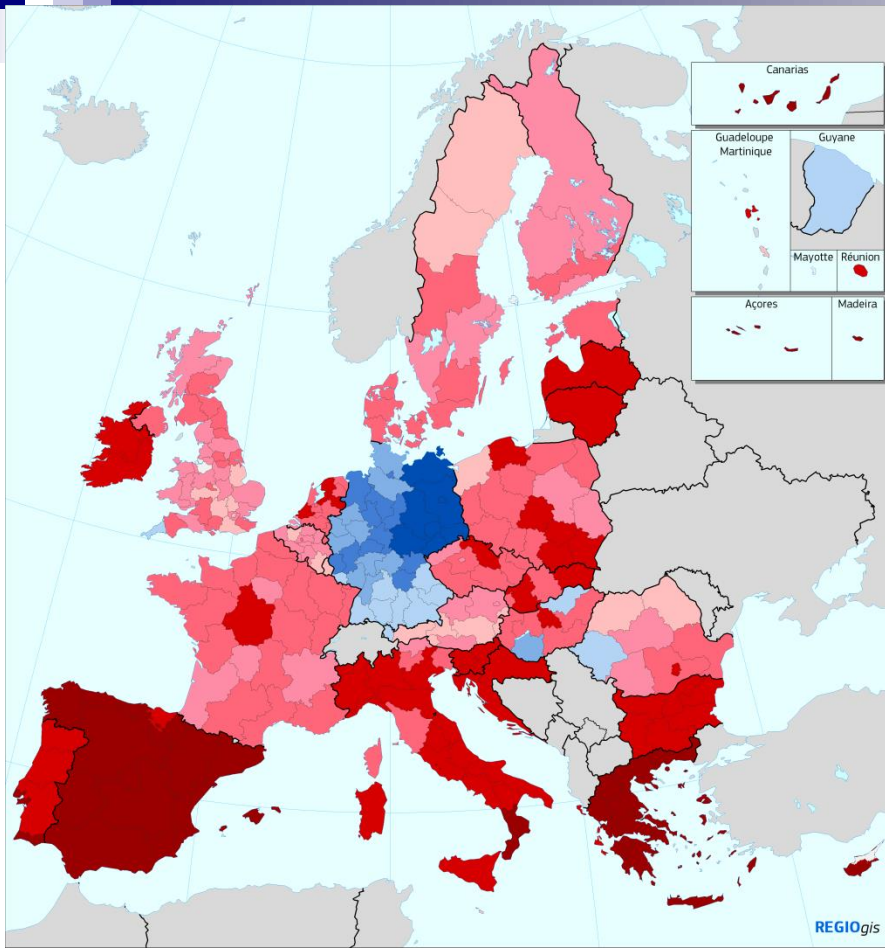
Growth of GDP per head in real terms, 2008-2011

Annual average % change

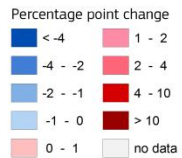




2014-2020 programming period



Change in unemployment rate, 2008-2013

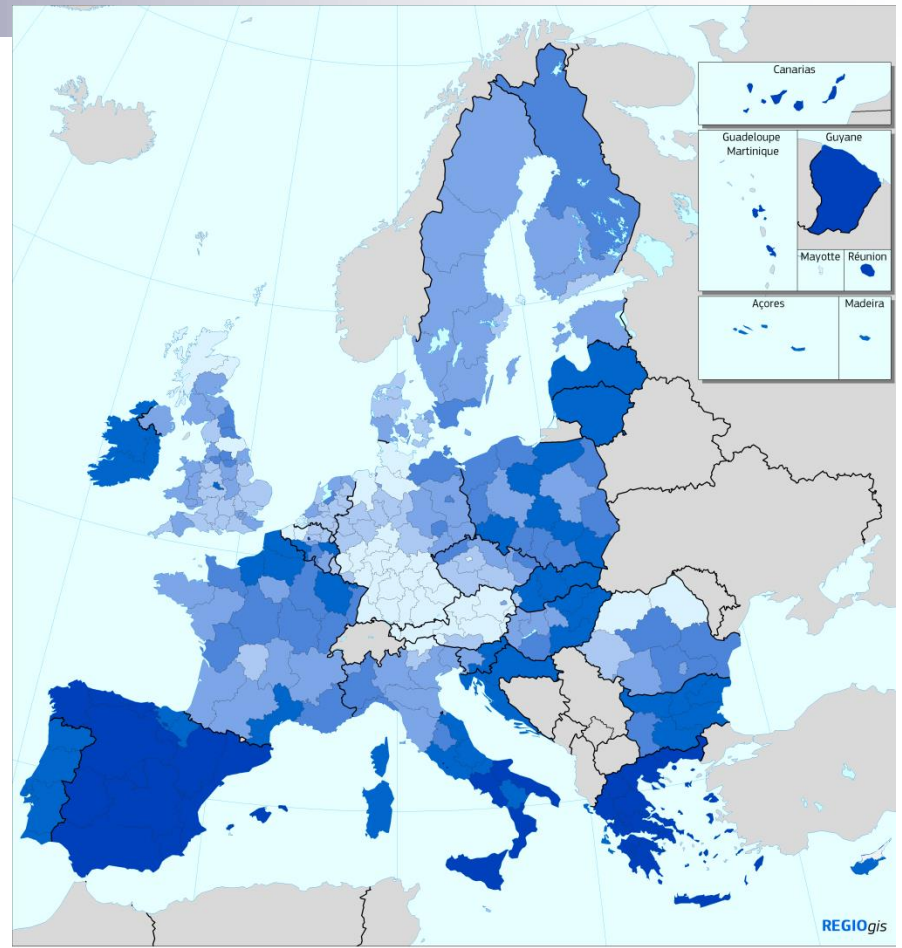


EU-28 = 3.8

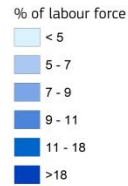
Source: Eurostat, DG REGIO



© EuroGeographics Association for the administrative boundaries



Unemployment rate, 2013



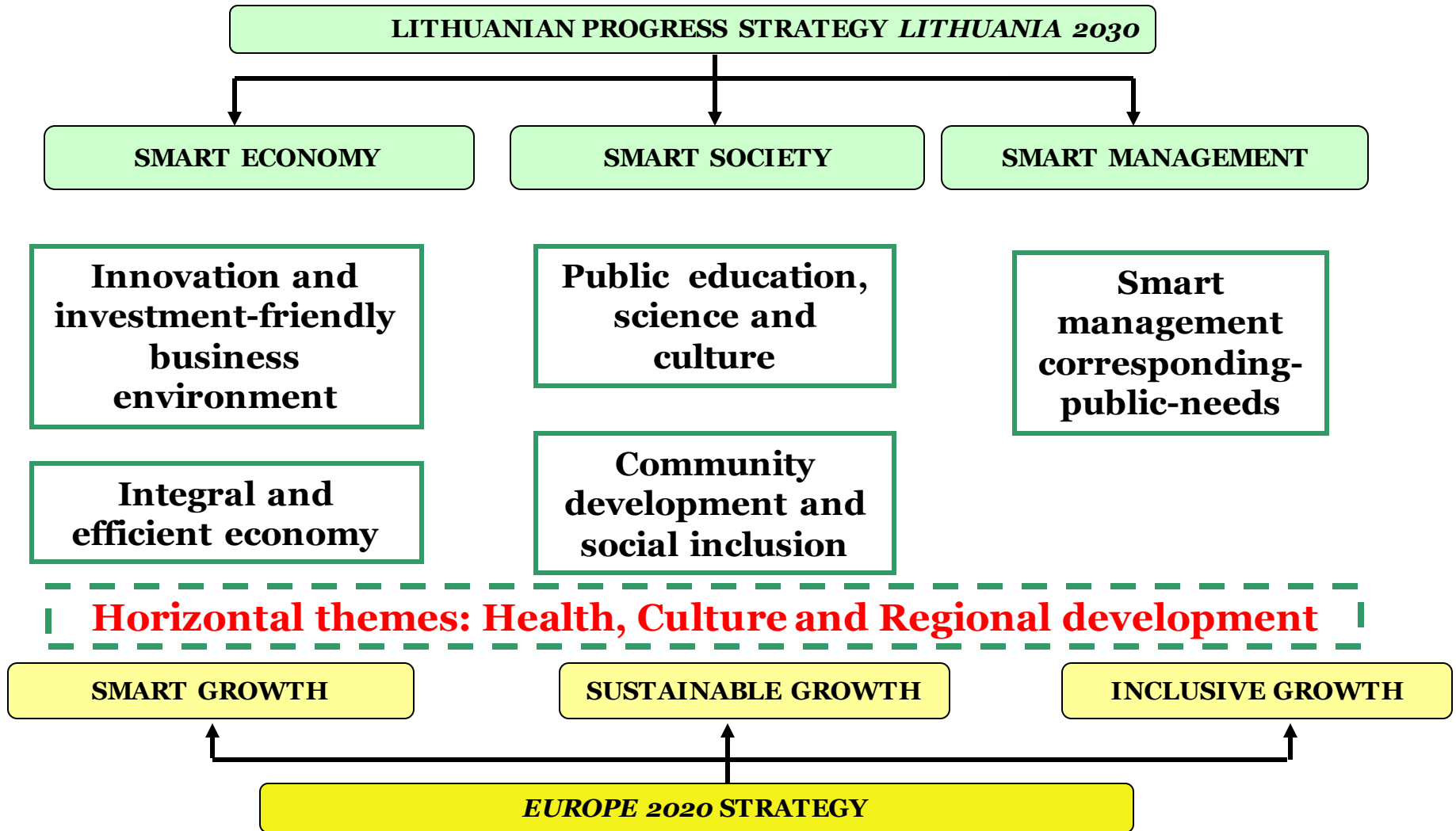
EU-28 = 10.8

Source: Eurostat



© EuroGeographics Association for the administrative boundaries

Lithuanian Progress Strategy *Lithuania 2030*: compatibility with *Europe 2020*





Thematic Objectives (with links to Europe 2020) for the investment in 2014-2020

- 1. Research & innovation**
- 2. Information and communication technologies (ICT)**
- 3. Competitiveness of Small and Medium-sized Enterprises (SMEs)**
- 4. Shift towards a low-carbon economy**
- 5. Climate change adaptation & risk prevention and management**
- 6. Environmental protection & resource efficiency**
- 7. Sustainable transport & removing bottlenecks in key network infrastructures**
- 8. Employment & supporting labour mobility**
- 9. Social inclusion & combating poverty**
- 10. Education, skills & lifelong learning**
- 11. Institutional capacity building & efficient public administrations**

Preparation to use the EU cohesion funds in 2014–2020: what has already been done (I)

The Commission of European Union structural support for the period 2014–2020 (hereinafter – the Commission) **was established** in the mid-2010

Members of the Commission:

- Representatives of ministries, implementing agencies, social, economic and regional partners;
- 47 members, of which 22 social, economic and regional partners.

The main tasks of the Commission are:

to approve:

- timetable on preparation works for the EU structural support in 2014–2020;
- drafts of the EU structural support programming documents for 2014–2020;
- draft model of management and control system for the EU structural support in 2014–2020.

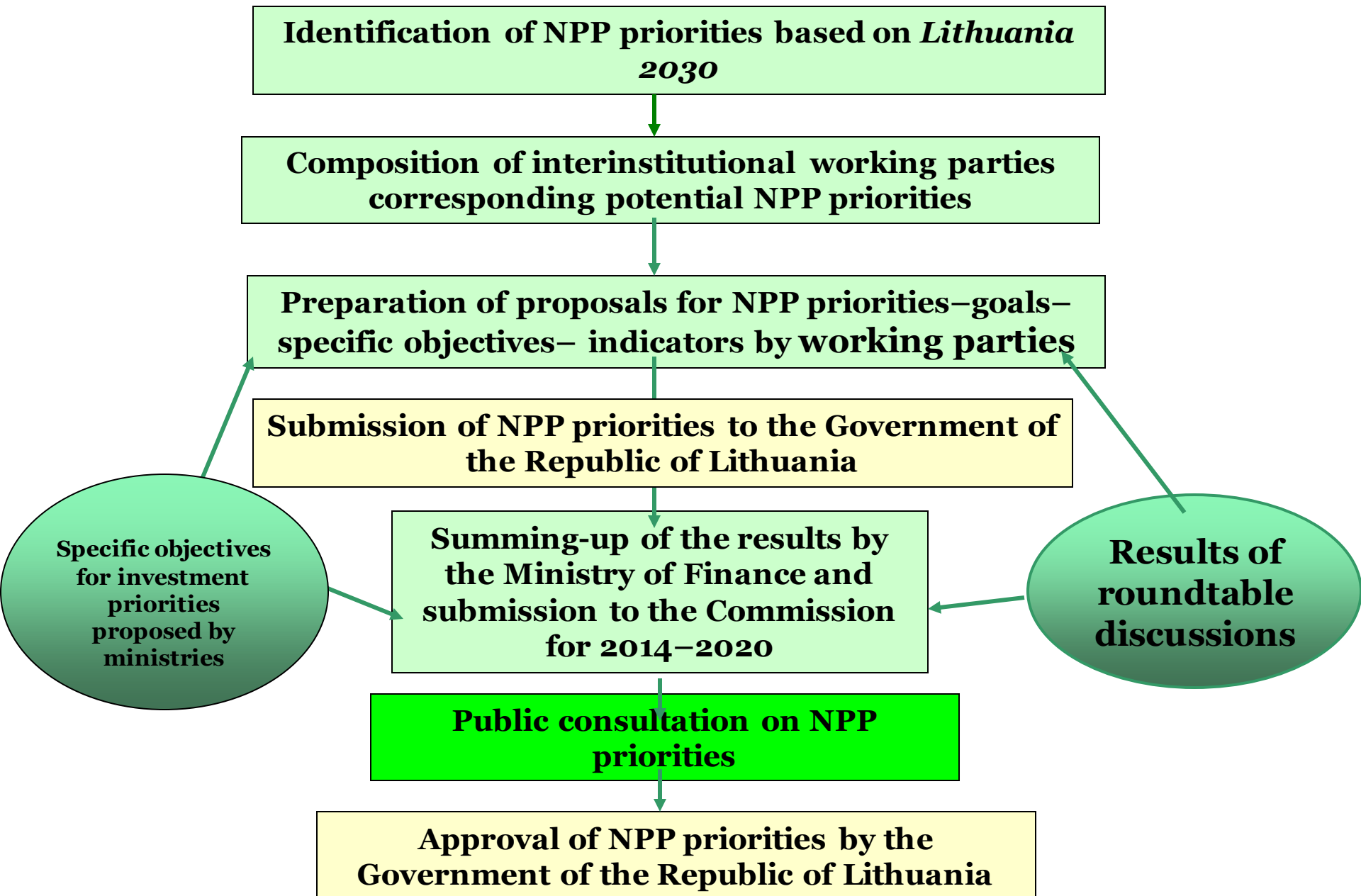
to prepare a draft of National Progress Programme (hereinafter – NPP).

Preparation to use the EU cohesion funds in 2014–2020: what has already been done (II)

Completed works of the Commission in 2011 (8 meetings) and the first quarter of 2012 (3 meetings):

- approved timetable on preparation works for the EU structural support in 2014–2020
- discussed possible priorities for the use of the EU structural support after 2013 in education, transport, social protection and employment, health care, economy and energy, culture, information society, agriculture and fishery sectors
- presented and discussed the proposals of the European Commission for MFF 2014–2020 and the future of the EU cohesion policy
- took the decision that programming documents should be prepared by taking into account the targets and priorities set in the EU Strategy for the Baltic Sea Region and its action plan.
- established 7 interinstitutional working parties for specification of NPP priorities.

Identification of NPP priorities



2014 – 2020. EU cohesion policy innovation

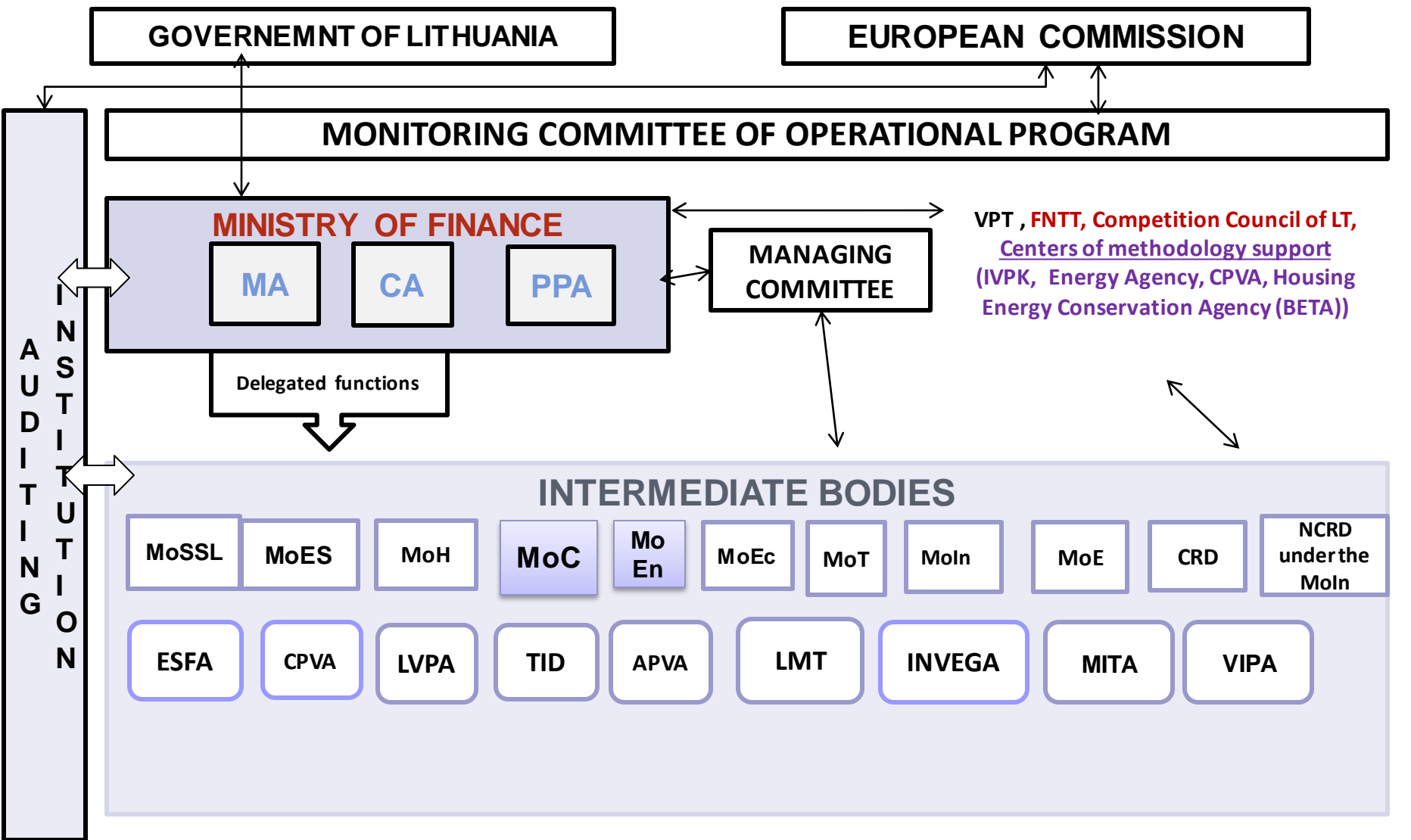
- **STRATEGIC APPROACH** strategic approach and the link with the strategy "Europe 2020" setting (for example, the thematic targets);
- **CONCENTRATION.** Thematic concentration concentration of priorities;
- **Restrictions on the distribution of EU funds;**
- **RESULTS.** Strategic programming more focus on results;
- **CONDITIONS.** Conditions (prior, macro-economic reference points);
- **LOCALIZATION.** integral territorial approach (for example, integrated Territorial Investment, communities initiated local development)
- **INITIATIVE.** (for example, the reduction of administrative burdens)

Priority investment areas for the 2014-2020 in the Operational Program of Lithuania

1. Research & innovation
2. Information and communication technologies (ICT)
3. Competitiveness of Small and Medium-sized Enterprises (SMEs)
4. Shift towards a low-carbon economy
5. Climate change adaptation & risk prevention and management
6. Environmental protection & resource efficiency
7. Sustainable transport & removing bottlenecks in key network infrastructures
8. *Employment & supporting labour mobility + Youth initiative (JUI)*
9. *Social inclusion & combating poverty*
10. Education, skills & lifelong learning
11. Institutional capacity building & efficient public administrations

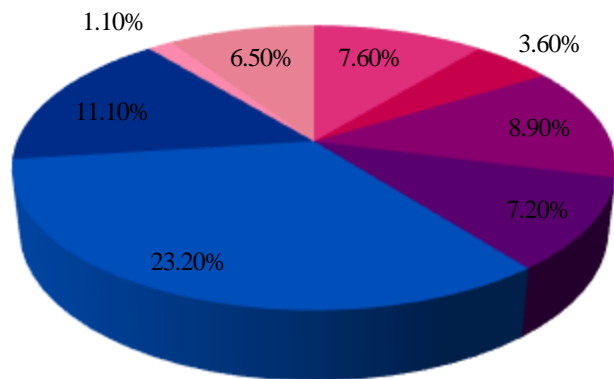
Ex ante conditionalities should be fulfilled

MANAGEMENT AND CONTROL SYSTEM OF 2014–2020 PROGRAMMING PERIOD

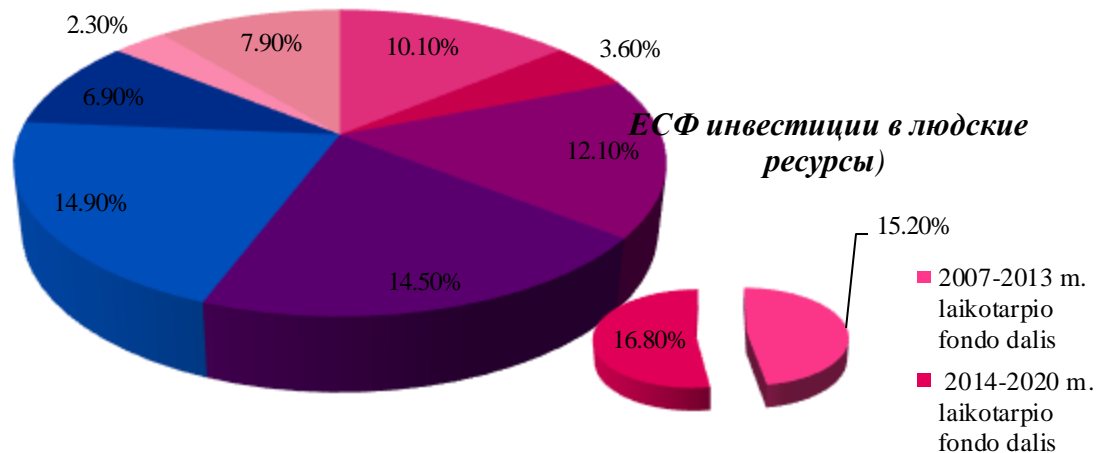


Инвестиционные приоритеты на 2014–2020 г. и их финансовая значимость по сравнению с 2007-2013 инвестиционным периодом

Инвестиционные приоритеты на 2007-2013



Инвестиционные приоритеты на 2014-2020



Pagrindinės ES fondų investavimo sritys

Pokytis

■ Moksliniai tyrimai, technologinė plėtra ir inovacijos	2,50%
■ Informacinė visuomenė (IT)	0,1%
■ Smulkaus ir vidutinio verslo konkurencingumas *	3,2%
■ Energijos efektyvumas ir atsinaujinantys išteklių energijai (mažai CO2 išmetanti ekonomika)	7,30%
■ Transporto sektorius (keliai, geležinkeliai, oro uostai ir kt.)	-8,30%
■ Aplinkos sektorius (vandens tiekimas, nuotekos, atliekų tvarkymas ir kt.)	-4,20%
■ Energetikos sektorius (elektros ir dujų jungtys)	1,20%
■ Užimtumas ir socialinė įtrauktis (Europos socialinis fondas)	1,40%
Europos socialinis fondas (kurio lėšomis finansuojami žmogiškieji išteklių: užimtumas, socialinė įtrauktis, mokymasis visą gyvenimą, administraciniai gebėjimai ir pan.)	1,60%

* Vertinant su 2007-2013 m. lėšomis skiriamomis finansinėmis priemonėmis

В 2007–2013 г. на развитие регионов- 11%



В 2014–2020 на развитие регионов- 15%

2014-2020 m. ES STRUKTŪRINIŲ FONDŲ INVESTICIJŲ VEIKSMŲ PROGRAMA	ES LĖŠOS – 23 mlrd. Lt
1 prioritetas. Mokslinių tyrimų, eksperimentinės plėtros ir inovacijų skatinimas (ŪM, ŠMM)	2 344 mln. ES lėšų (10,2 %)
2 prioritetas. Informacinės visuomenės skatinimas (SM)	842,6 mln. Lt (3,7%)
3 prioritetas. Smulgiojo ir vidutinio verslo konkurencingumo skatinimas (ŪM)	1 835,5 mln. Lt (8 %)
4 prioritetas. Energijos efektyvumo ir atsinaujinančių išteklių energijos gamybos ir naudojimo skatinimas (EM, ŪM, AM, SM)	3 053,8 mln. Lt (13,3%)
5 prioritetas. Aplinkosauga, gamtos išteklių darnus naudojimas ir prisitaikymas prie klimato kaitos (AM, VRM, KM, ŪM)	2 892,7 mln. Lt (12,6%)
6 prioritetas. Darniojo transporto, pagrindinių tinklų infrastruktūros skatinimas (SM, EM)	4 283,8 mln. Lt (18,6%)
7 prioritetas. Kokybiško užimtumo ir dalyvavimo darbo rinkoje skatinimas (SADM, VRM, KM)	2 393,7 mln. Lt (10,4%) <i>+ 109,7 mln. Lt (JUI)</i>
	<i>Iš jų SADM:</i> 964,5 mln. Lt (4,2%) <i>+109,7 mln. Lt (JUI)</i>
8 prioritetas. Socialinės įtraukties didinimas ir kova su skurdu (SADM, SAM, VRM)	1 862,3 mln. Lt (8,1 %)
	<i>Iš jų SADM:</i> 873,5 mln. Lt (3,8%)
9 prioritetas. Visuomenės švietimas ir žmogiškųjų išteklių potencialo didinimas (ŠMM, ŪM)	2 292,2 mln. Lt (10%)
10 prioritetas. Visuomenės poreikius atitinkantis ir pažangus viešasis valdymas (VRM)	519,1 mln. Lt (2,2%)
11 prioritetas. Techninė parama veikslių programai administruoti, informuoti apie veikslių programą ir jai vertinti	736,7 mln. Lt (3,2%)

7 приоритет :« Занятость и участие на рынке труда»

на 2014-2020 г. г. период предусмотренные инвестиции	Инвестиции из ЕС фондов
	279,34 млн. EUR

Намеченные достигнуть результаты:

- **общая занятость 2020 г. должна составить 72,8 % (Стратегия Литвы по занятости)**
- **по ЕС общая занятость 2020 г. - 75 %; (Стратегия «Европа 2020»)**



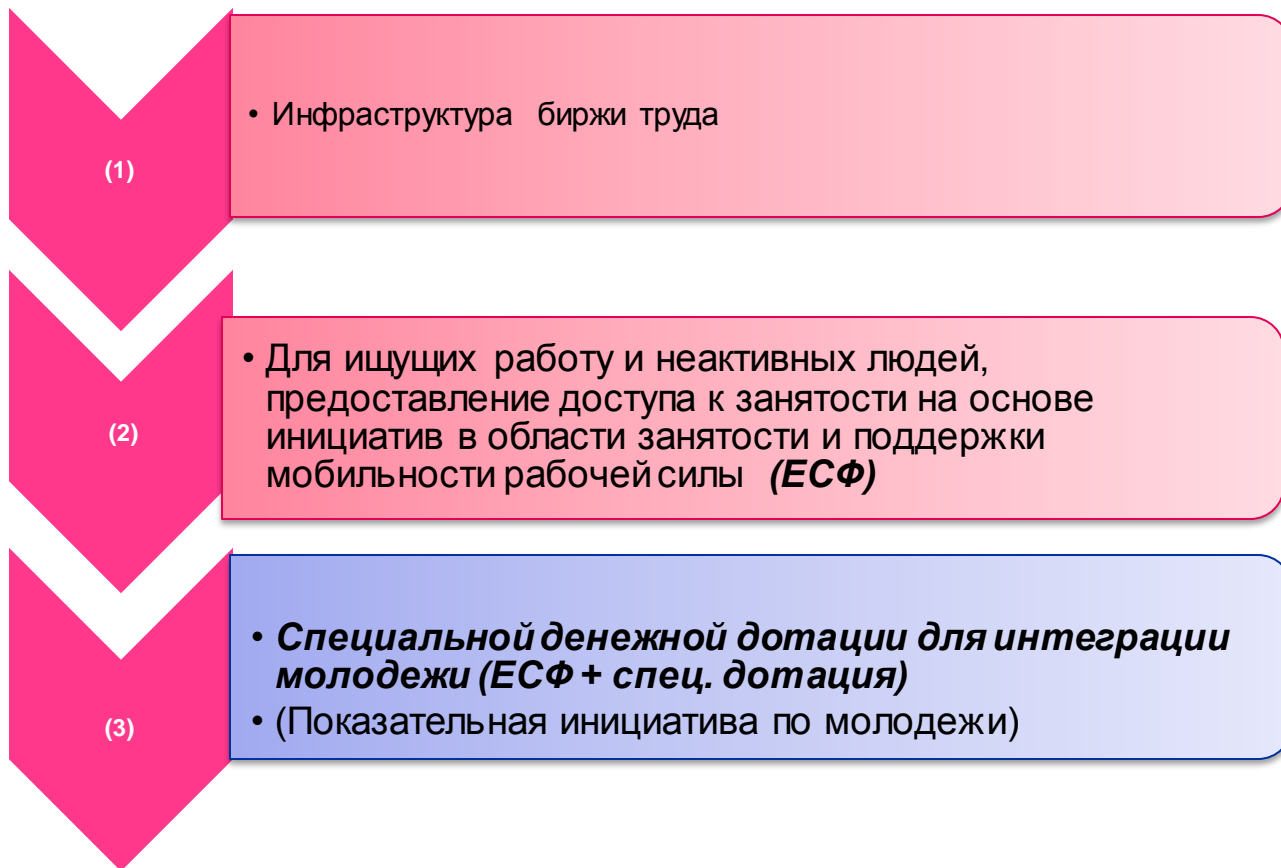
MOKSLAS - EKONOMIKA - SANGLAUDA



EUROPOS SĄJUNGA

Kuriame Lietuvos ateitį

Инвестиционные приоритеты



8 приоритет: «Повышение социальной интеграции и борьба с нищетой»

на 2014-2020 г. г. период <i>предусмотренные инвестиции</i>	99,86 млн EUR из ЕФРР
	153,12 млн. EUR из ЕСФ

Намеченные достигнуть результаты:

до 2020 г. В странах ЕС снизить число людей проживающих в нищете на 25 % или на 20 млн. Для этой цели назначить 20 % всех ресурсов ЕСФ



8 приоритет: «Повышение социальной интеграции и борьба с нищетой»

- **Инвестиционное направление**

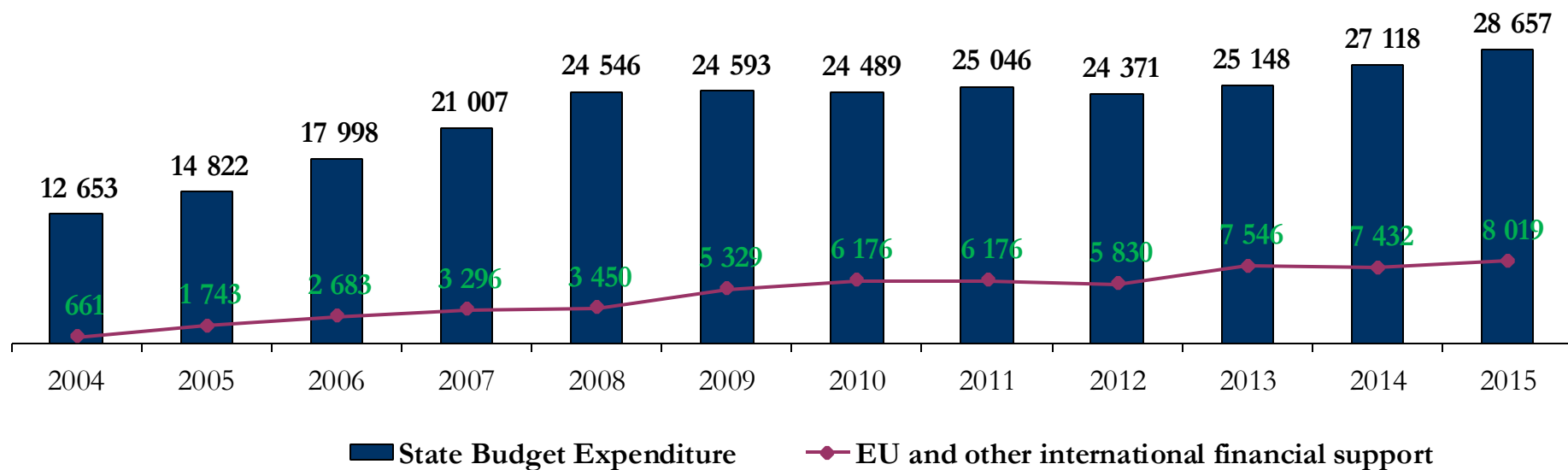
- инвестиции в инфраструктуру здравоохранения и социальной сферы (развитие инфраструктуры), переход от стационарных услуг на нестационарные интегрированные общинных услуги (49,93 млн. EUR – ЕФРР + **54,07 млн. EUR ЕСФ**)

- **Инвестиционное направление**

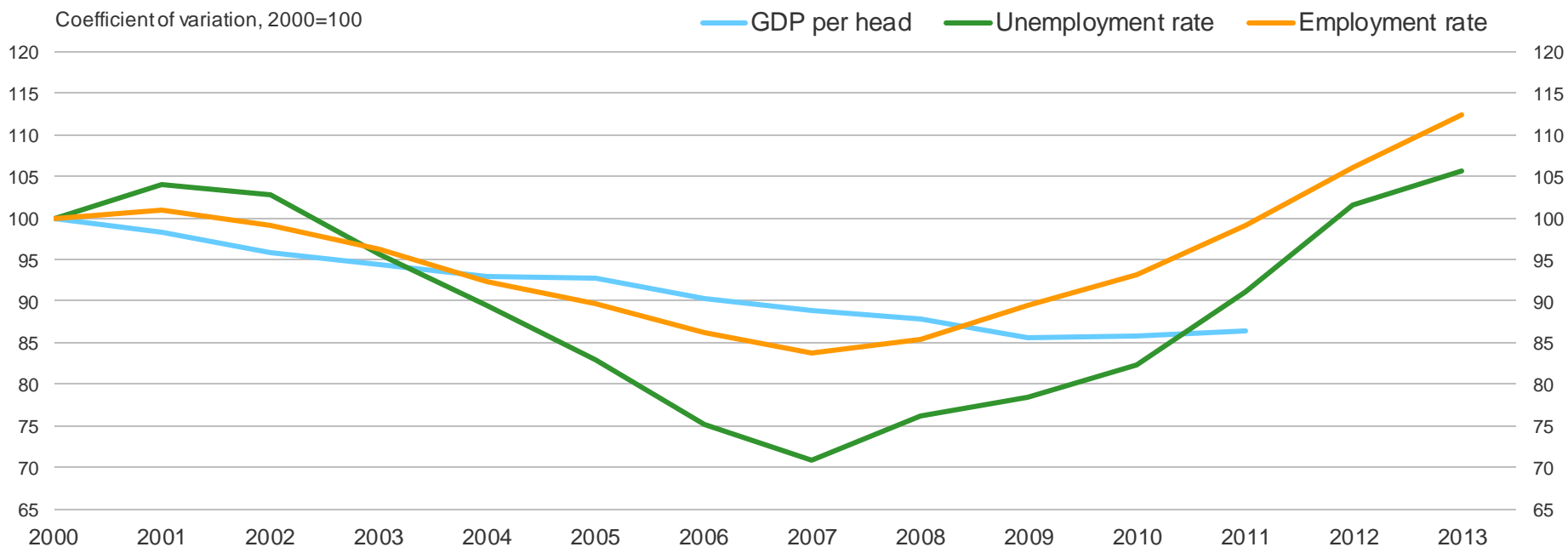
- обеспечение мероприятий активного включения людей особенно отдаленных от рынка труда (40,55 млн. EUR – ЕФРР)

- **Активная занятость пожилых людей + 54 и старше (17,38 млн. EUR – ЕСФ)**
социальные и психологические подходы к применению работы пожилых людей, в целях возвращающихся на рынок труда или нахождения на рынке труда; обучение, исследования, обучение работодателей; организация добровольной деятельности и другой соответствующей деятельности

The dynamics of the State budget expenditure for 2004-2015 (million. Lt)



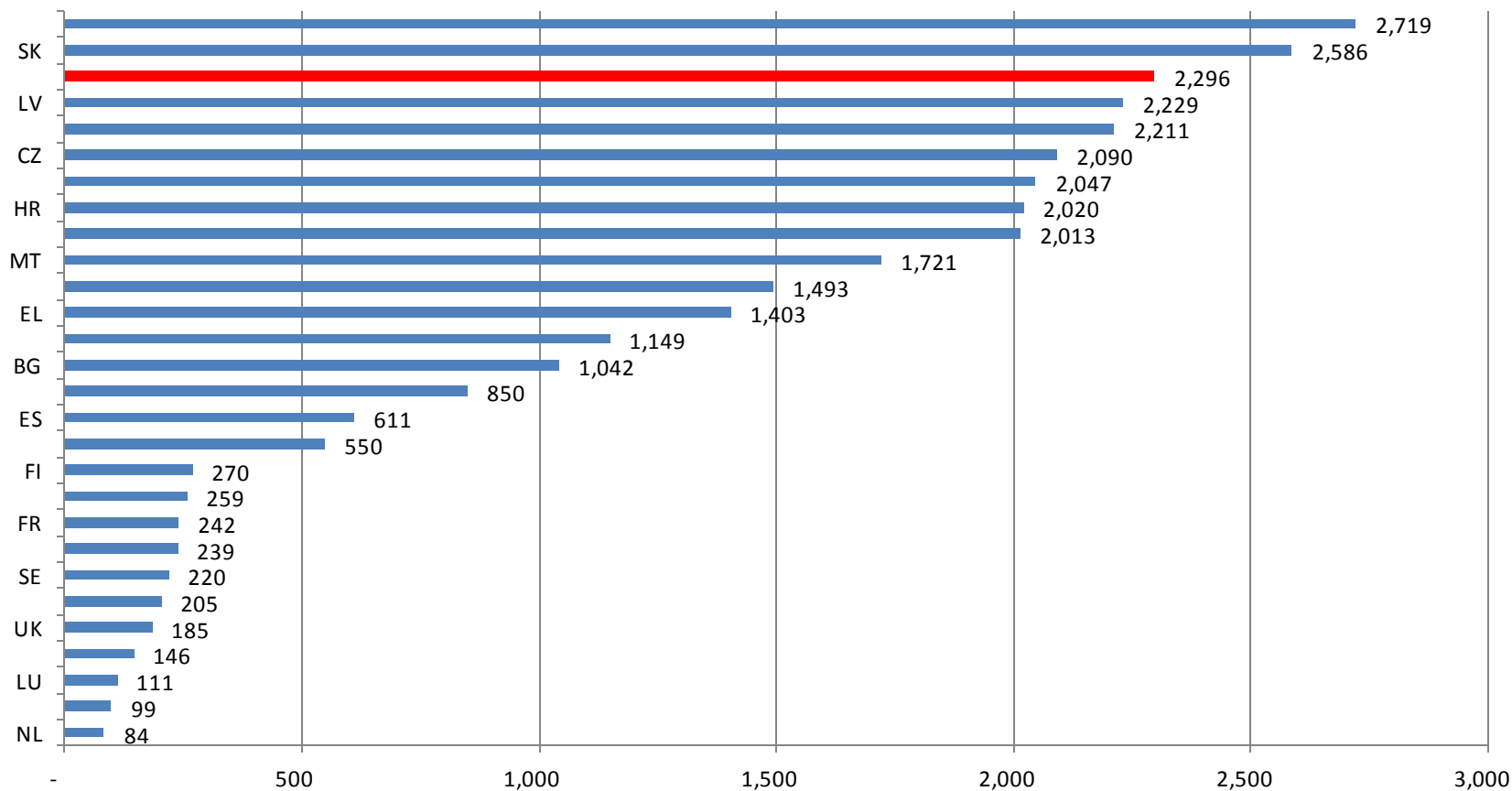
Coefficient of variation of GDP per head, employment rate (15-64), unemployment rate, EU-27 NUTS 2 regions, 2000-2012



Source: Eurostat, DG REGIO calculations

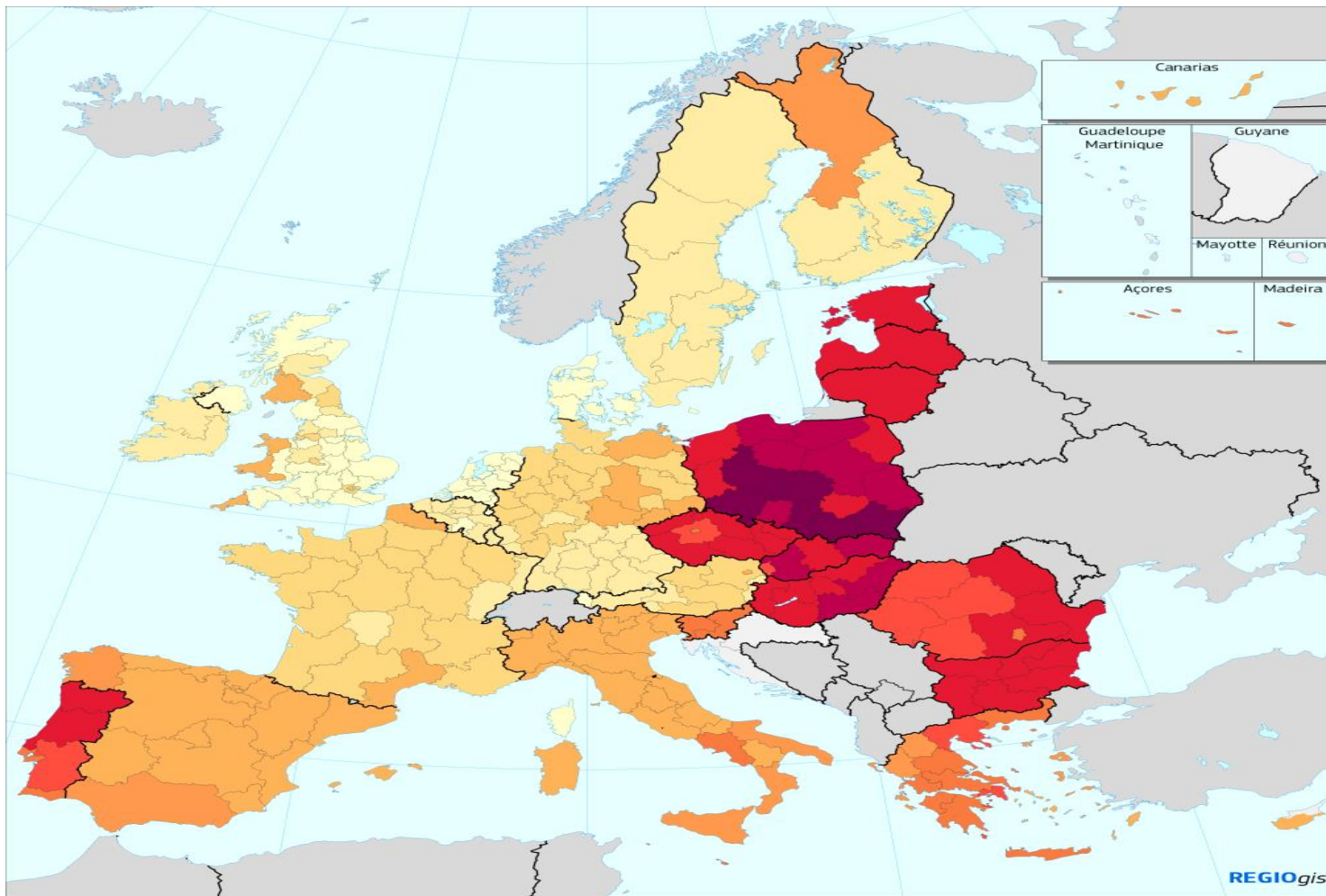


The EU structural funds resources per capita for the period 2014-2020 * (in EUR, at current prices)



*Palyginimui naudojamas 2013 m. gyventojų skaičius.

Šaltinis: Eurostat



Impact of the 2014-2020 cohesion policy programmes on GDP, 2030

% above baseline



Source: RHOMOLO

0 500 Km

An aerial photograph of a city, likely in Europe, showing a dense urban landscape with numerous buildings featuring red-tiled roofs. The city is interspersed with green trees and parks. The lighting suggests a bright, sunny day. The text is overlaid in the lower-middle portion of the image.

**THANK YOU &
LOOKING FORWARD TO SEEING YOU IN EU!**